

Energy Meter *(for economy run)*



This meter is available with the motor kit to enable you to practice economical driving and minimise battery drain. The Economy Run part of the Performance category of the competition will require you to have the least battery drain over approx. 10km. The meter will need to be fitted prior to race Day and will NOT affect performance.

Measurement:

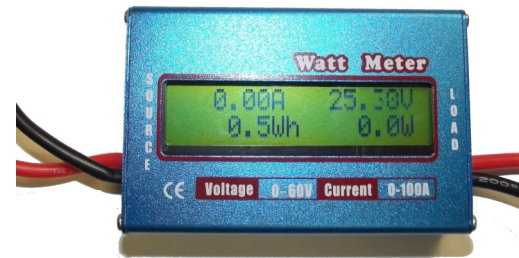
Instantaneous **Voltage** and **Current** readings can be taken off the meter. Current indicates the rate at which energy carrying charges are leaving the battery. For economy you should try to keep the

Current (Amps) flowing from the battery as low as possible.

Power in Watts shows how fast energy is leaving the battery.

Power = Voltage x Current

The **total amount of energy** drained off over a period of time is measured in **Watt hours (W.h)**. This is what will be measured on Race Day at the end of the Economy Run.

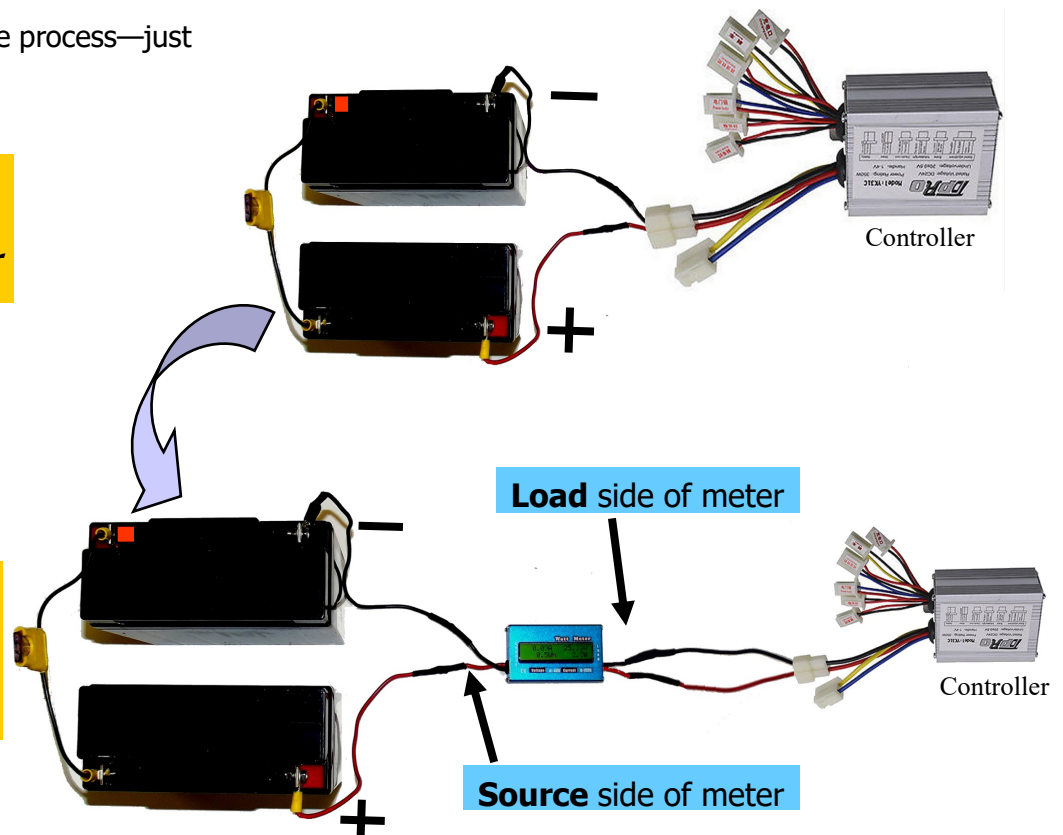


Connection:

Connection is a simple process—just follow these steps.

Step 1
*Get system going
WITHOUT Watt meter*

Step 2
*Connect Watt meter
between battery
& controller*



Note: The Watt Meter can be reset to zero by removing and replacing the fuse.

Be sure to wrap all bare joints with insulation tape!